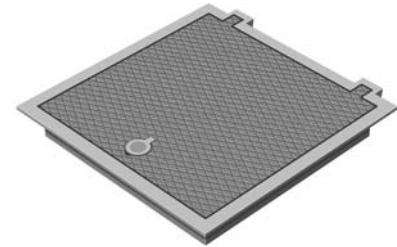
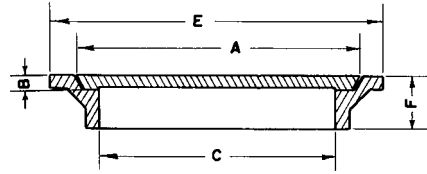


## R-6660 to R-6661 Series Manhole Frame, Lid

### Light Duty



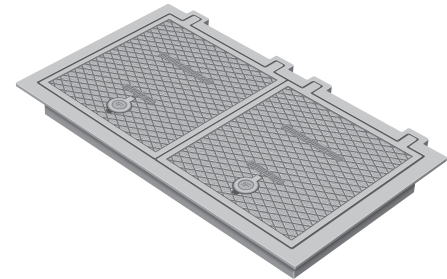
Illustrating R-6660-NH

Frames and lids in this series can be furnished standard without hinges or with Type T hinges as indicated below. Also, castings can be furnished with Type R butt hinges in stainless steel. (When butt hinges are required, specify the non-hinged unit with the hinge of your choice.) If fastening device is necessary, see page 16 for various types available on all units of this series.

These castings are also available using a gasketed and bolted lid. See R-6665-0-1 Series.

Specify number of lids required where option is shown. Hold-open safety bars are furnished standard on most T-hinged units.

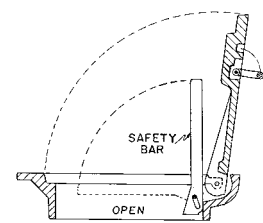
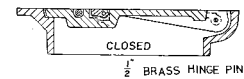
The specific location and number of hinges, handles and pickholes on these units may vary depending on the size and shape of the lids, and may not be exactly as illustrated. If the location and number of hinges, handles or pickholes is critical on your particular project, please specify requirements.



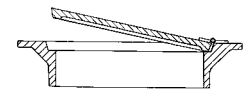
Illustrating R-6661-LH

		Dimensions in inches						No. of Lids
Catalog No. Not Hinged	Catalog No. T-Hinged	A	B	C	E	F		
<b>Square</b>								
R-6660-AP	-	12 x 12	3/4	10 x 10	18 1/2 x 18 1/2	4	1	
R-6660-CP	-	13 x 13	5/8	12 x 12	15 x 15	3	1	
R-6660-DP	R-6660-DH	15 x 15	3/4	13 5/16 x 13 5/16	19 x 19	4	1	
R-6660-FP	R-6660-FH	18 1/2 x 18 1/2	3/4	17 x 17	23 x 23	3	1	
R-6660-GP	R-6660-GH	19 3/4 x 19 3/4	3/4	18 1/2 x 18 1/2	24 x 24	4	1	
R-6660-HP	R-6660-HH	21 1/2 x 21 1/2	3/4	19 1/2 x 19 1/2	24 1/2 x 24 1/2	4	1	
R-6660-JP	R-6660-JH	23 1/2 x 23 1/2	3/4	21 7/8 x 21 7/8	28 1/2 x 28 1/2	4	1	
R-6660-KP	R-6660-KH	25 1/2 x 25 1/2	3/4	24 x 24	30 x 30	4	1	
R-6660-MP	R-6660-MH	30 x 30	3/4	28 x 28	34 x 34	4	1	
R-6660-NP	R-6660-NH	32 x 32	3/4	30 x 30	36 x 36	4	1	
R-6660-PP	R-6660-PH	38 x 38	3/4	36 x 36	46 x 46	4	1	
R-6660-RP	R-6660-RH	44 x 44	1	42 x 42	49 x 49	4	2	
R-6660-TP *	R-6660-TH *	56 3/8 x 56 3/8	1 1/2	54 x 54	64 x 64	4 1/2	2	
<b>Rectangular</b>								
R-6661-A1P	R-6661-A1H	14 x 19	3/4	12 x 17	18 1/4 x 23 3/8	4	1	
R-6661-BP	-	14 x 26	3/4	12 x 24	18 x 30	4	1	
R-6661-CP	R-6661-CH	18 x 32	3/4	16 x 30	20 x 34	4	1	
R-6661-DP	R-6661-DH	19 5/8 x 49 5/8	3/4	18 x 48	22 x 52	4	2	
R-6661-EP	R-6661-EH	21 1/2 x 24 1/2	3/4	20 x 23	26 x 29	6	1	
R-6661-F2P *	-	21 1/2 x 65 5/8	3/4	20 x 64	28 x 72	4	2	
R-6661-F3P *	-	24 1/2 x 55 1/2	3/4	22 x 54	30 x 62	4	2	
R-6661-FP	R-6661-FH	22 x 32	3/4	20 x 30	26 x 36	5 1/4	1	
R-6661-HP	R-6661-HH	26 x 32	3/4	24 x 30	30 x 36	4	1	
R-6661-JP	R-6661-JH	26 x 38	3/4	24 x 36	30 x 42	4	1 or 2	
R-6661-KP	R-6661-KH	26 x 44	3/4	24 x 42	30 x 48	4	1	
R-6661-LP	R-6661-LH	25 1/2 x 49 1/2	3/4	24 x 48	30 x 54	4	2	
R-6661-NP	R-6661-NH	25 1/2 x 61 1/2	3/4	24 x 60	31 x 67	6	2	
R-6661-PP	R-6661-PH	28 3/4 x 31 3/4	3/4	27 x 30	34 x 37	4	1	
R-6661-TP	R-6661-TH	31 5/8 x 37 5/8	3/4	30 x 36	37 x 43	4	1	
R-6661-UP	R-6661-UH	32 x 43 3/4	3/4	30 x 42	37 x 47 1/2	4	1 or 2	
R-6661-V1P	R-6661-V1H	31 5/8 x 73	3/4	30 x 72	36 x 78	4	2	
R-6661-VP	R-6661-VH	32 x 50	3/4	30 x 48	36 x 54	4	1 or 2	
R-6661-YP *	R-6661-YH *	44 x 110	3/4	42 x 108	52 x 118	4	3	

\* Frame in sections, bolted at corners.

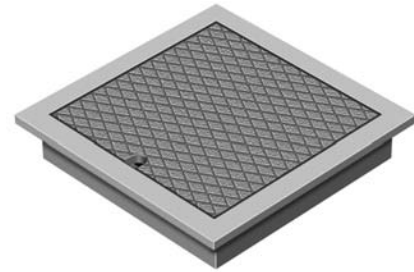
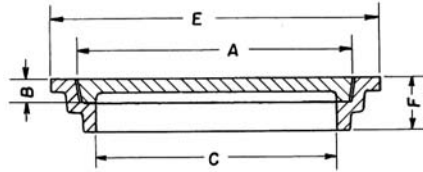
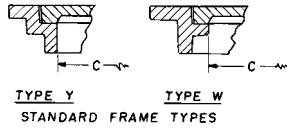


TYPE "R" BUTT HINGES



## R-6662 to R-6663 Series Manhole Frame, Lid

### Heavy Duty



Illustrating R-6662-CP

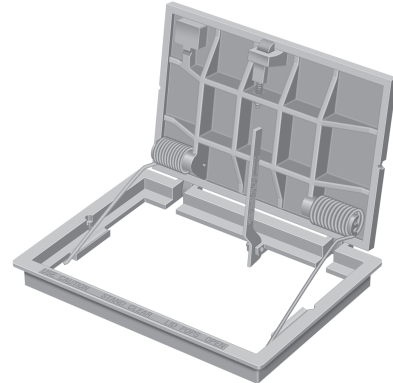
Frames and lids in this series can be furnished standard without hinges or with Type T hinges as indicated below. Also, castings can be furnished with Type R butt hinges in stainless steel. (When butt hinges are required, specify the non-hinged unit with the hinge of your choice.) If fastening device is necessary, see page 16 for various types available on all units of this series.

These castings are also available using a gasketed and bolted lid. See R-6665-2-3 Series. For similar castings with gratings, see R-6672-3 Series.

For complete information on our Spring Assist hatch products, please refer to the R-3498 Series.

Hold-open safety bars are furnished standard on most T-hinged units.

The specific location and number of hinges, handles and pickholes on these units may vary depending on the size and shape of the lids, and may not be exactly as illustrated. If the location and number of hinges, handles or pickholes is critical on your particular project, please specify requirements.



Illustrating R-6663-JS

Catalog No. Not Hinged	Catalog No. T-Hinged	Catalog No. Spring Assist	Dimensions in inches				No. of Lids	Frame Type
			A	B	C	E		
<b>Square</b>								
R-6662-AP	-		12 1/4 x 12 1/4	1	11 1/2 x 11 1/2	15 x 15	6	Y
R-6662-BP **	-		13 3/4 x 13 3/4	1 1/2	12 x 12	18 x 18	4	W
R-6662-CP **	R-6662-CH		18 x 18	1 1/2	16 x 16	22 x 22	4	W
R-6662-EP **	R-6662-EH		20 x 20	1 1/2	18 x 18	24 x 24	4	W
R-6662-GP **	R-6662-GH		21 1/2 x 21 1/2	1 1/2	20 x 20	26 x 26	4	W
R-6662-HP **	R-6662-HH		23 1/2 x 23 1/2	1 1/2	22 x 22	28 x 28	4	W
R-6662-JP	-		25 1/4 x 25 1/4	1 3/4	23 x 23	31 1/2 x 31 1/2	4	Y
R-6662-KP **	R-6662-KH	R-6662-KS	25 3/4 x 25 3/4	1 1/2	24 x 24	30 x 30	4	W
R-6662-LP	-		27 x 27	2	25 x 25	33 1/2 x 33 1/2	4	Y
R-6662-MP **	R-6662-MH		27 1/2 x 27 1/2	1 1/2	26 x 26	32 x 32	4	W
R-6662-NP **	R-6662-NH		29 1/2 x 29 1/2	1 1/2	28 x 28	34 x 34	4	W
R-6662-PP	R-6662-PH	R-6662-PS	31 1/2 x 31 1/2	1 1/2	30 x 30	36 x 36	4	W
R-6662-RP	R-6662-RH	R-6662-RS	37 x 37	1 1/2	36 x 36	42 x 42	4	W
R-6662-TP +	R-6662-TH	R-6662-TS	50 x 50	1 1/2	48 x 48	56 x 56	4	Y
<b>Rectangular</b>								
R-6663-AP **	R-6663-AH		14 x 20	1 1/2	12 x 18	18 x 24	4	W
R-6663-BP **	R-6663-BH		13 1/2 x 25 1/2	1 1/2	12 x 24	18 x 30	4	W
R-6663-CP	R-6663-CH		19 1/2 x 25 1/2	1 1/2	18 x 24	24 x 30	4	W
R-6663-DP **	R-6663-DH		19 1/2 x 31 1/2	1 1/2	18 x 30	24 x 36	4	W
R-6663-E1P	R-6663-E1H		20 x 44	1 1/2	18 x 42	24 x 48	4	Y
R-6663-EP **	R-6663-EH		19 3/4 x 37 3/4	1 1/2	18 x 36	24 x 42	4	W
R-6663-FP	-		22 x 32	1 1/4	20 x 30	26 x 36	4	Y
R-6663-HP	R-6663-HH		26 x 32	1 1/2	24 x 30	30 x 36	4	Y
R-6663-JP	R-6663-JH	R-6663-JS	25 1/2 x 37 1/2	1 1/2	24 x 36	30 x 42	4	W
R-6663-KP **	R-6663-KH		25 3/4 x 49 3/4	1 1/2	24 x 48	30 x 54	4	W
R-6663-MP **	R-6663-MH		31 3/4 x 37 3/4	1 1/2	30 x 36	30 x 42	4	W
R-6663-NP **	R-6663-NH		31 1/2 x 49 1/2	1 1/2	30 x 48	36 x 54	4	W
R-6663-O1P *	R-6663-O1H *		38 x 50	1 1/2	36 x 48	44 1/2 x 56 1/2	4	Y
R-6663-OP	R-6663-OH		35 3/4 x 59 7/8	1 3/8	34 x 58	40 x 64	6	Y
R-6663-PP *	R-6663-PH *		44 x 62	1 3/8	42 x 60	50 1/2 x 68 1/2	4	W

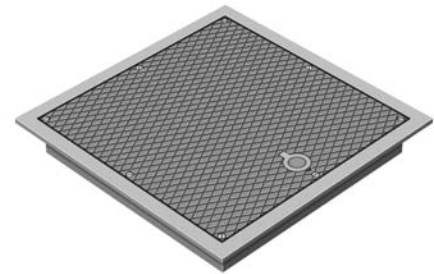
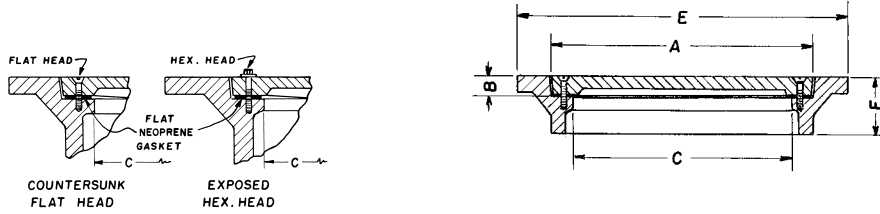
\* Frame in sections bolted at corners.

\*\* Furnished with pickhole instead of G-handle.

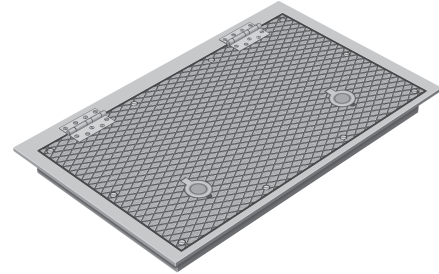
+ Available with centered 24" diameter removable center access lid.

**R-6665-0 to R-6665-1 Series**  
**Manhole Frame, Bolted/Gasketed Lid**

**Light Duty**



*Illustrating R-6665-0NP*



*Illustrating R-6665-1KH*

Square and rectangular sizes in this series furnished standard with countersunk stainless steel flat head cap screws, flat neoprene gasket, Type G lift handle and, when so indicated, Type R stainless steel butt hinge.

All units available in cast aluminum or bronze for spark proof application.

Units are shipped assembled with gasket glued to frame.

**The specific location and number of hinges, handles and pickholes on these units may vary depending on the size and shape of the lids, and may not be exactly as illustrated. If the location and number of hinges, handles or pickholes is critical on your particular project, please specify requirements.**

Dimensions in inches

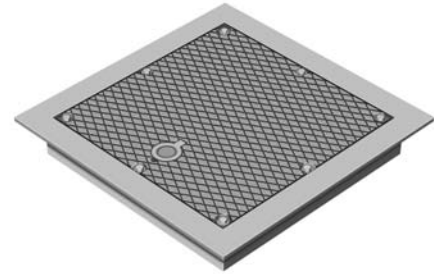
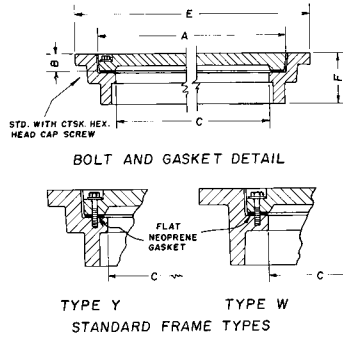
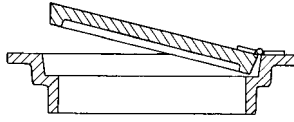
Catalog No. Not Hinged	Catalog No. Steel Butt Hinge	A	B	C	E	F	No. of Bolts
<b>Square</b>							
R-6665-0AP	R-6665-0AH	12 x 12	3/4	10 x 10	18 1/2 x 18 1/2	4	4
R-6665-0CP	R-6665-0CH	13 x 13	5/8	12 x 12	15 x 15	3	4
R-6665-0DP	R-6665-0DH	15 x 15	3/4	13 x 13	19 x 19	4	4
R-6665-0FP	R-6665-0FH	18 1/2 x 18 1/2	3/4	17 x 17	23 x 23	3	4
R-6665-0GP	R-6665-0GH	19 3/4 x 19 3/4	3/4	17 1/2 x 17 1/2	24 x 24	4	8
R-6665-0HP	R-6665-0HH	21 1/2 x 21 1/2	3/4	18 1/2 x 18 1/2	24 1/2 x 24 1/2	4	8
R-6665-0JP	R-6665-0JH	23 1/2 x 23 1/2	3/4	20 7/8 x 20 7/8	28 1/2 x 28 1/2	4	8
R-6665-0KP	R-6665-0KH	25 1/2 x 25 1/2	3/4	23 x 23	30 x 30	4	8
R-6665-0MP	R-6665-0MH	30 x 30	3/4	27 x 27	34 x 34	4	8
R-6665-0NP	R-6665-0NH	32 x 32	3/4	29 x 29	36 x 36	4	8
<b>Rectangular</b>							
R-6665-1A1P	R-6665-1A1H	14 x 19	3/4	11 x 16	18 1/4 x 23 3/8	4	4
R-6665-1BP	R-6665-1BH	14 x 26	3/4	11 x 23	18 x 30	4	6
R-6665-1CP	R-6665-1CH	18 x 32	3/4	15 x 29	20 x 34	4	6
R-6665-1DP	R-6665-1DH	19 5/8 x 49 5/8	3/4	17 x 47	22 x 52	4	12
R-6665-1EP	R-6665-1EH	21 1/2 x 24 1/2	3/4	19 x 22	26 x 29	6	8
R-6665-1F3P *	R-6665-1F3H *	24 1/2 x 55 1/2	3/4	19 x 29	30 x 62	4	12
R-6665-1FP	R-6665-1FH	22 x 32	3/4	22 x 54	26 x 36	5 1/4	10
R-6665-1HP	R-6665-1HH	26 x 32	3/4	23 x 29	30 x 36	4	8
R-6665-1JP	R-6665-1JH	26 x 38	3/4	23 x 35	30 x 42	4	10
R-6665-1KP	R-6665-1KH	26 x 44	3/4	22 x 40	30 x 48	4	10
R-6665-1LP	R-6665-1LH	25 1/2 x 49 1/2	3/4	23 x 47	30 x 54	4	12
R-6665-1NP	R-6665-1NH	25 1/2 x 61 1/2	3/4	23 x 59	31 x 67	6	12
R-6665-1PP	R-6665-1PH	29 x 32	3/4	26 x 29	34 x 37	4	8
R-6665-1TP	R-6665-1TH	31 5/8 x 37 5/8	3/4	29 x 35	37 x 43	4	12
R-6665-1UP	R-6665-1UH	32 x 43 3/4	3/4	29 x 41	37 x 47 1/2	4	12
R-6665-1V1P	R-6665-1V1H	31 5/8 x 73	3/4	29 x 47	36 x 78	4	18
R-6665-1VP	R-6665-1VH	32 x 50	3/4	29 x 71	36 x 54	4	14

\* Frame in sections bolted at corners.

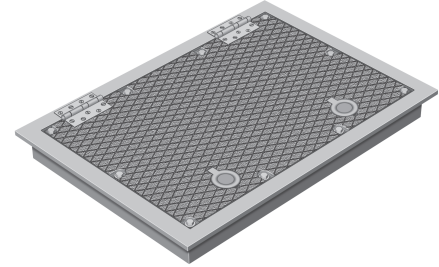
## R-6665-2 to R-6665-3 Series Manhole Frame, Bolted/Gasketed Lid

Heavy Duty

TYPE "R" BUTT HINGES



Illustrating R-6665-2LP



Illustrating R-6665-3JH

Square and rectangular sizes in this series furnished standard with countersunk stainless steel flat head cap screws, flat neoprene gasket, Type G lift handle and, when so indicated, Type R stainless steel butt hinge.

NOTE: Some heavier lids may have bottom ribs that extend below the base of the frame. If this would cause a problem in your installation, advise when ordering.

Units are shipped assembled with gasket glued to frame.

The specific location and number of hinges, handles and pickholes on these units may vary depending on the size and shape of the lids, and may not be exactly as illustrated. If the location and number of hinges, handles or pickholes is critical on your particular project, please specify requirements.

		Dimensions in inches					No. of Bolts	Frame Type
Catalog No. Not Hinged	Catalog No. Steel Butt Hinge	A	B	C	E	F		
<b>Square</b>								
R-6665-2AP	R-6665-2AH	12 1/4 x 12 1/4	1	11 1/2 x 11 1/2	15 x 15	6	4	Y
R-6665-2BP	R-6665-2BH	13 3/4 x 13 3/4	1 1/2	12 x 12	18 x 18	4	4	W
R-6665-2CP	R-6665-2CH	18 x 18	1 1/2	16 x 16	22 x 22	4	4	W
R-6665-2EP	R-6665-2EH	20 x 20	1 1/2	18 x 18	24 x 24	4	4	W
R-6665-2GP	R-6665-2GH	21 1/2 x 21 1/2	1 1/2	20 x 20	26 x 26	4	4	W
R-6665-2HP	R-6665-2HH	23 1/2 x 23 1/2	1 1/2	21 x 21	28 x 28	4	8	W
R-6665-2JP	R-6665-2JH	25 1/4 x 25 1/4	1 3/4	22 x 22	31 1/2 x 31 1/2	4	8	Y
R-6665-2KP	R-6665-2KH	25 3/4 x 25 3/4	1 1/2	23 x 23	30 x 30	4	8	W
R-6665-2LP	R-6665-2LH	27 x 27	2	24 x 24	33 1/2 x 33 1/2	4	8	Y
R-6665-2MP	R-6665-2MH	27 1/2 x 27 1/2	1 1/2	25 x 25	32 x 32	4	8	W
R-6665-2NP	R-6665-2NH	29 1/2 x 29 1/2	1 1/2	27 x 27	34 x 34	4	8	W
R-6665-2OP	R-6665-2OH	30 x 30	1 3/4	27 x 27	34 x 34	4	8	Y
R-6665-2PP	R-6665-2PH	31 1/2 x 31 1/2	1 1/2	29 x 29	37 x 37	4	8	Y
R-6665-2RH								
R-6665-2RP								
R-6665-2TP	R-6665-2TH	50 x 50	1 1/2	47 x 47	56 x 56	4	16	Y
<b>Rectangular</b>								
R-6665-3AP	R-6665-3AH	14 x 20	1 1/2	11 x 17	18 x 24	4	6	W
R-6665-3BP	R-6665-3BH	13 1/2 x 25 1/2	1 1/2	11 x 23	18 x 30	4	6	W
R-6665-3CP	R-6665-3CH	19 1/2 x 25 1/2	1 1/2	17 x 23	24 x 30	4	8	W
R-6665-3DP	R-6665-3DH	19 1/2 x 31 1/2	1 1/2	17 x 29	24 x 36	4	8	W
R-6665-3E1P	R-6665-3E1H	20 x 44	1 1/2	17 x 41	24 x 48	4	10	Y
R-6665-3EP	R-6665-3EH	19 3/4 x 37 3/4	1 1/2	17 x 35	24 x 42	4	10	W
R-6665-3FP	R-6665-3FH	22 x 32	1 1/4	19 x 29	26 x 36	4	8	Y
R-6665-3HP	R-6665-3HH	26 x 32	1 1/2	23 x 29	30 x 36	4	8	Y
R-6665-3JP	R-6665-3JH	25 1/2 x 37 1/2	1 1/2	23 x 35	30 x 42	4	10	W
R-6665-3KP	R-6665-3KH	25 3/4 x 49 3/4	1 1/2	23 x 47	30 x 54	4	12	W
R-6665-3NP	R-6665-3NH	31 1/2 x 49 1/2	1 1/2	29 x 47	36 x 54	4	16	W
R-6665-3O1P	R-6665-3O1H	38 x 50	1 1/2	35 x 47	44 1/2 x 56 1/2	4	14	W
R-6665-3OP *	R-6665-3OH *	36 x 60	1 3/8	33 x 57	40 x 64	6	16	Y

\* Frame in sections bolted a corners.