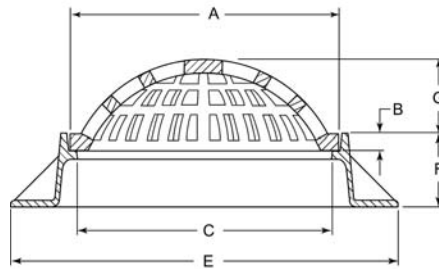


■ Note: When specifying/ordering, refer to "Choosing the proper inlet grate" on pages 117-118.
 For a complete listing of FREE OPEN AREAS and WEIR PERIMETERS of all NEENAH grates, refer to pages 306-311.

R-2560 Series
Inlet Frame, Beehive Grate

Suitable for drainage in circumstances where clogging of a flat grating is a problem. Excellent for roadside or earth ditch inlets.



Illustrating R-2560-E

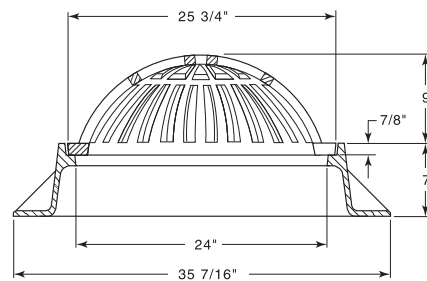
CATALOG NUMBER	GRATE TYPE	SQ. FT. OPEN	WEIR PERIMETER LINEAL FEET
R-2560-A	Beehive	0.3	3.1
R-2560-C	Beehive	0.7	4.7
R-2560-C1	Beehive	0.7	5.8
R-2560-C2	Beehive	0.7	5.8
R-2560-D	Beehive	1.0	5.1
R-2560-D1	Beehive	1.2	5.8
R-2560-D2	Beehive	1.2	5.8
R-2560-D3	Beehive	1.2	5.8
R-2560-D5	Beehive	1.0	5.1
R-2560-D6	Beehive	1.0	5.1
R-2560-D7	Beehive	1.3	5.3
R-2560-D8	Beehive	1.3	5.3
R-2560-E	Beehive	1.2	6.0
R-2560-EA	Beehive	1.2	6.7
R-2560-EB	Beehive	1.8	6.7
R-2560-E1	Beehive	1.4	6.7
R-2560-E2	Beehive	2.0	6.7
R-2560-E5	Beehive	1.2	6.7
R-2560-E6	Beehive	1.8	6.7
R-2560-E7	Beehive	1.2	6.7
R-2560-E8	Beehive	1.8	6.7
R-2560-E9	Beehive	1.2	6.7
R-2560-E10	Beehive	1.8	6.7
R-2560-G	Beehive	1.5	8.4

Dimensions in inches							
Catalog No.	A	B	C	E	F	G	Frame/Lid
R-2560-A	12	1	11	19	4	4	R-1791-A
R-2560-C	18 1/4	1 1/4	16 3/4	30	8	4	R-1900-A
R-2560-C1	22	1 1/2	20 15/32	27 9/16	3 15/16	4 1/2	R-1690
R-2560-C2	22	1 1/2	20 1/2	28 1/4	6	4 1/2	R-1761
R-2560-D	22	1 1/2	20	35	9	4 1/2	R-1710
R-2560-D1	22	1 1/2	20 15/32	27 9/16	3 15/16	7	R-1690
R-2560-D2	22	1 1/2	20 1/2	28 1/4	6	7	R-1761
R-2560-D3	22	1 1/2	20	35	9	7	R-1710
R-2560-D5	22 3/4	1 1/2	21 1/4	34	4	4 1/2	R-1647-A
R-2560-D6	22 3/4	1 1/2	21	34	9	4 1/2	R-1713
R-2560-D7	22 3/4	1 1/2	21 1/4	34	4	7	R-1647-A
R-2560-D8	22 3/4	1 1/2	21	34	9	7	R-1713
R-2560-E	23	1 1/2	21 1/16	35 7/16	8 7/8	7	R-1550-A
R-2560-E1	25 3/4	7/8	24	35 7/16	7	6	R-1733
R-2560-E2	25 3/4	7/8	24	35 7/16	7	9	R-1733
R-2560-E5	25 3/4	7/8	24 1/8	35 1/2	8	6	R-1733-A
R-2560-E6	25 3/4	7/8	24 1/8	35 1/2	8	9	R-1733-A
R-2560-E7	25 3/4	7/8	24 1/8	35 1/2	9	6	R-1733-B
R-2560-E8	25 3/4	7/8	24 1/8	35 1/2	9	9	R-1733-B
R-2560-E9	25 3/4	7/8	24 1/8	35 1/2	10	6	R-1733-C
R-2560-E10	25 3/4	7/8	24 1/8	35 1/2	10	9	R-1733-C
R-2560-EA	25 3/4	7/8	24 1/8	35 7/16	4	6	R-1733-1
R-2560-EB	25 3/4	7/8	24 1/8	35 7/16	4	9	R-1733-1
R-2560-G	32	1 1/2	30	46	7	4	R-1740-B

R-2561
Inlet Frame, Beehive Grate

CATALOG NUMBER	GRATE TYPE	SQ. FT. OPEN	WEIR PERIMETER LINEAL FEET
R-2561	Beehive	2.0	6.7

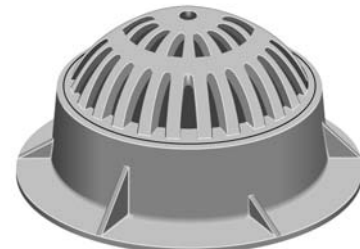
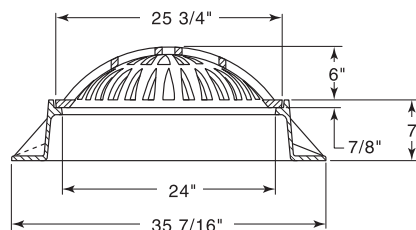
Available Lid: R-1733



R-2561-A
Inlet Frame, Beehive Grate

CATALOG NUMBER	GRATE TYPE	SQ. FT. OPEN	WEIR PERIMETER LINEAL FEET
R-2561-A	Beehive	1.2	6.7

Available Lid: R-1733

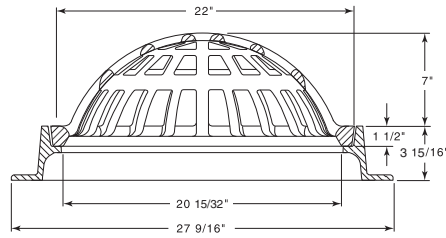


■ Note: When specifying/ordering grates, refer to “Choosing the proper inlet grate” on pages 117-118.
 For a complete listing of FREE OPEN AREAS and WEIR PERIMETERS of all NEENAH grates, refer to pages 306-311.

R-2563
Inlet Frame, Beehive Grate

CATALOG NUMBER	GRATE TYPE	SQ. FT. OPEN	WEIR PERIMETER LINEAL FEET
R-2563	Beehive	1.2	5.8

Available Lid: R-1690

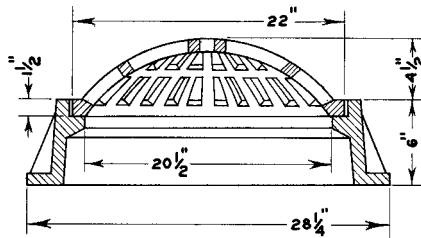


INLET FRAMES & GRATES 2

R-2564
Inlet Frame, Beehive Grate

CATALOG NUMBER	GRATE TYPE	SQ. FT. OPEN	WEIR PERIMETER LINEAL FEET
R-2564	Beehive	1.0	5.8

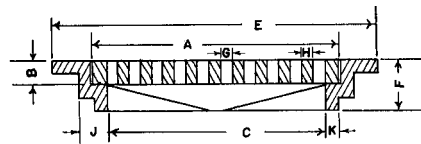
Available Lid: R-1761



R-2565 Series
Inlet Frame, Grate

Heavy Duty

CATALOG NUMBER	GRATE TYPE	SQ. FT. OPEN	WEIR PERIMETER LINEAL FEET
R-2565-A	G	0.8	5.5
R-2565-C	G	1.2	6.0
R-2565-E	G	1.8	7.1
R-2565-F	G	1.8	7.1
R-2565-G	G	1.6	7.1
R-2565-H	G	1.9	7.6
R-2565-J	G	2.4	8.5



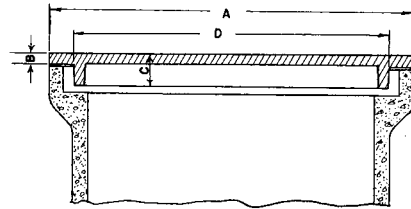
For Frame/Lid alternatives, see the R-6052 Series.

Catalog No.	Dimensions in inches									
	A	B	C	E	F	G	H	J	K	Frame/Lid
R-2565-A	21	2 1/2	18	27 1/2	5	1 3/8	1	2 7/8	1	R-6052-A
R-2565-C	23	1 1/4	20	29 3/4	4	1 3/8	1	2 1/2	1	R-6052-C
R-2565-E	27	1 1/4	23 1/2	33 1/2	4	1 1/2	1	2 1/4	3/4	R-6052-D
R-2565-F	27	2 1/2	24	33 1/2	5	1 1/2	1	2 7/8	1	R-6052-G
R-2565-G	27	2 1/2	24	33 1/2	5	1 1/2	1	2 7/8	1	R-6052-G
R-2565-H	29	1 3/4	27	35	6	1	1	2 7/8	1	R-6052-H
R-2565-J	32 3/8	2	30	39 1/2	6	1 1/2	1	2 7/8	1	R-6052-J

■ Note: When specifying/ordering grates, refer to “Choosing the proper inlet grate” on pages 117-118.
 For a complete listing of FREE OPEN AREAS and WEIR PERIMETERS of all NEENAH grates, refer to pages 306-311.

R-4044 Series Manhole Lids for Pipe Bell

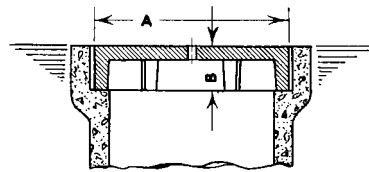
Light Duty



Catalog No.	Pipe Size	Dimensions in inches			
		A	B	C	D
R-4044-A	4	7 1/8	1/2	1 1/4	5 3/8
R-4044-B	6	9 1/2	1/2	1 1/2	7 3/4
R-4044-D	10	14 3/4	1/2	2 1/4	12 3/4
R-4044-E	12	17 1/4	5/8	2 1/4	14 1/2
R-4044-F	15	21 1/4	5/8	2 1/4	17
R-4044-G	18	25 1/2	5/8	2 1/2	21 3/4
R-4044-J	21	29 1/2	3/4	2 1/2	24 7/8
R-4044-K	24	33 1/4	3/4	2 1/2	29 1/4

R-4055 Series Sewer Pipe Bell Cover

Light Duty



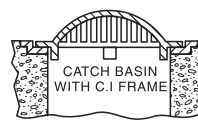
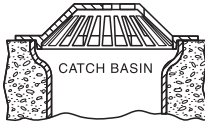
Supplied with 1" lift hole as standard. Available without lift hole if specified.
 When ordering, please advise pipe size. Bell and spigot vitrified clay and concrete pipe are made under many specifications and dimensions vary. Check the cover sizes in the table to be sure they will fit the pipe you are using.

Catalog No.	Pipe Size	Dimensions in inches	
		A	B
R-4055-4	4	5 3/4	1 1/2
R-4055-6	6	8	2
R-4055-8	8	10 3/8	2 1/4
R-4055-10	10	12 5/8	2 1/2
R-4055-12	12	14 3/4	2 1/2
R-4055-15	15	18 1/4	2 3/4
R-4055-18	18	22	2 3/4
R-4055-21	21	25 1/2	3
R-4055-24	24	29	3 1/4
R-4055-27	27	32 3/4	3 1/2
R-4055-30	30	36	3 3/4

■ Note: When specifying/ordering grates, refer to "Choosing the proper inlet grate" on pages 117-118.
 For a complete listing of FREE OPEN AREAS and WEIR PERIMETERS of all NEENAH grates, refer to pages 306-311.

R-4340 Series Round Beehive Grate

Light Duty



CATALOG NUMBER	GRATE TYPE	SQ. FT. OPEN	WEIR PERIMETER LINEAL FEET
R-4340-A	Beehive	1.5	6.2
R-4340-B	Beehive	1.1	6.0
R-4340-C	Beehive	1.2	6.0
R-4340-F	Beehive	1.6	6.5

CATALOG NUMBER	GRATE TYPE	SQ. FT. OPEN	WEIR PERIMETER LINEAL FEET
R-4340-F1	Beehive	0.7	4.5
R-4340-G	Beehive	0.6	5.0
R-4340-H	Beehive	0.5	4.5



Illustrating R-4340-A



Illustrating R-4340-B

May be used in vitrified clay pipe bell, on a concrete catch basin, or in a cast iron frame as shown. Effective where debris may interfere with drainage, such as at a roadside or in a median strip.

Bell and spigot vitrified clay and concrete pipe are made under many specifications and dimensions vary. Check the grate sizes in the table to be sure they will fit the pipe you are using.

Catalog No.	Dimensions in inches							
	O Dia.	O.D. Lugs	Dia. Bhv.	Ht. Bhv.	No. Lugs	Size Bars	Size Op.	Pipe Size
R-4340-A	34	26 1/4	23 7/8	6	*	1 1/2	1	24
R-4340-B ≠	33	23	23	3	6	2	1 1/2	24
R-4340-C	33	29	23	5 3/4	4	1	1 1/4	24
R-4340-F	33	28	25	5	4	1	1	24
R-4340-F1 **	25 1/2	21 3/4	17	3	4	1	1	18
R-4340-G **	28	18	19	3	3	1 3/4	2	15
R-4340-H	25	15	17	3	3	1 5/8	1 3/4	12

* Furnished with ring instead of lugs.

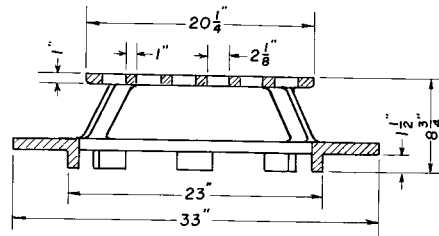
** Frame not available.

≠ Grate flange lettered "DUMP NO WASTE - DRAINS TO RIVER"

R-4341-A Ditch Grate, Stool Type

Heavy Duty

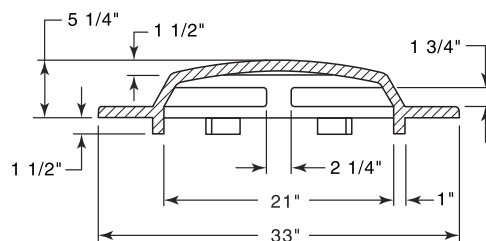
CATALOG NUMBER	GRATE TYPE	SQ. FT. OPEN	WEIR PERIMETER LINEAL FEET
R-4341-A	Beehive	2.5	6.0



R-4342 Ditch Grate, Stool Type

Light Duty

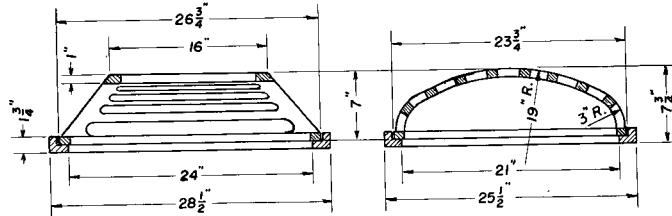
CATALOG NUMBER	GRATE TYPE	SQ. FT. OPEN	WEIR PERIMETER LINEAL FEET
R-4342	Beehive	2.0	6.0



■ Note: When specifying/ordering grates, refer to "Choosing the proper inlet grate" on pages 117-118.
 For a complete listing of FREE OPEN AREAS and WEIR PERIMETERS of all NEENAH grates, refer to pages 306-311.

R-4343
Ditch Grate, Frame

Light Duty

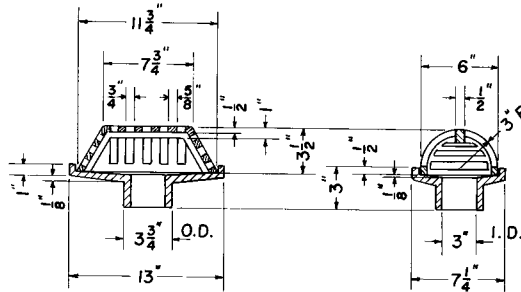


CATALOG NUMBER	GRATE TYPE	SQ. FT. OPEN	WEIR PERIMETER LINEAL FEET
R-4343	Beehive	2.4	8.4

R-4344
Railroad Bridge Drain Grate, Frame

Light Duty

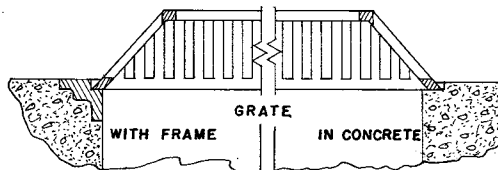
CATALOG NUMBER	GRATE TYPE	SQ. FT. OPEN	WEIR PERIMETER LINEAL FEET
R-4344	Beehive	0.2	2.9



R-4345 to R-4347 Series
Square Beehive Drainage Grate, Frame

Light Duty

CATALOG NUMBER	GRATE TYPE	SQ. FT. OPEN	WEIR PERIMETER LINEAL FEET
R-4345	Beehive	2.0	8.6
R-4346	Beehive	2.0	8.6
R-4347	Beehive	2.0	8.6



For off-roadway construction.

These castings are suitable for use at low points of large graded areas and will drain a substantial volume of surface water from all sides.

Catalog No.	Grate Overall	Dimensions in inches			
		Grate Top Size	Frame Overall	Height Grate	Height Frame
R-4345	26 x 26	12 x 12	-	6 1/4	-
R-4346	26 x 26	12 x 12	30 x 30	6 1/4	4
R-4347	27 5/8 x 27 5/8	12 x 12	-	6 1/4	-

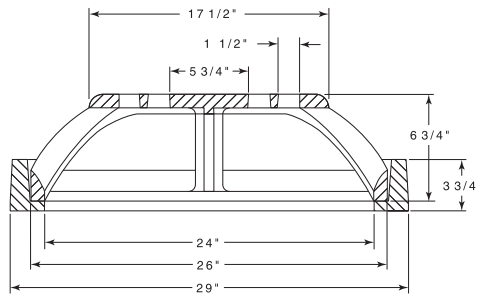
DRAINAGE GRATES 7

■ Note: When specifying/ordering grates, refer to "Choosing the proper inlet grate" on pages 117-118.
 For a complete listing of FREE OPEN AREAS and WEIR PERIMETERS of all NEENAH grates, refer to pages 306-311.

R-4349-C Median Drain Frame, Grate

Heavy Duty

CATALOG NUMBER	GRATE TYPE	SQ. FT. OPEN	WEIR PERIMETER LINEAL FEET
R-4349-C	Beehive	2.4	6.9

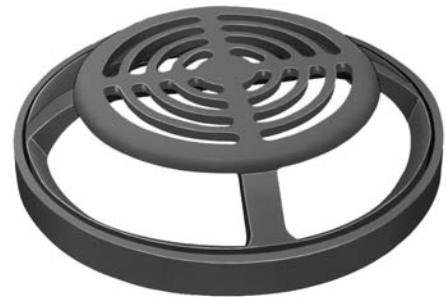
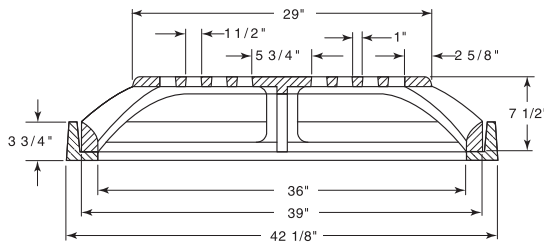


For use in narrow median on divided highways, freeways or expressways. Provides large capacity drainage when required during heavy rainfalls.

R-4349-D Median Drain Frame, Grate

Heavy Duty

CATALOG NUMBER	GRATE TYPE	SQ. FT. OPEN	WEIR PERIMETER LINEAL FEET
R-4349-D	Beehive	5.4	10.2



For use in narrow median on divided highways, freeways or expressways. Provides large capacity drainage when required during heavy rainfalls.

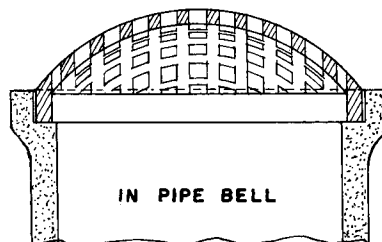
DRAINAGE GRATES

7

R-4350 Series Beehive Grate for Sewer Pipe Bell

Heavy Duty

CATALOG NUMBER	GRATE TYPE	SQ. FT. OPEN	WEIR PERIMETER LINEAL FEET
R-4350-1	Beehive	0.3	2.7
R-4350-A	Beehive	0.3	3.1
R-4350-B	Beehive	0.4	3.9
R-4350-C	Beehive	0.6	4.8
R-4350-D	Beehive	1.0	5.8
R-4350-E	Beehive	1.7	7.6



Bell and spigot vitrified clay and concrete pipe are made under many specifications and dimensions vary. Check the grate sizes in the table to be sure they will fit the pipe you are using.

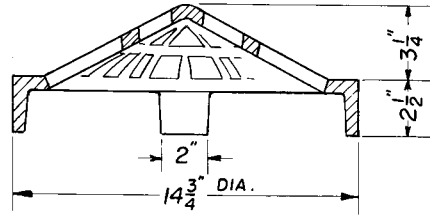
Dimensions in inches				
Catalog No.	Pipe Size	Diameter	Thickness at Rim	Overall Height
R-4350-1	8	10 3/8	2	4
R-4350-A	10	12	1	4
R-4350-B	12	14 3/4	2 1/2	5 1/2
R-4350-C	15	18 1/4	2 1/2	6 1/4
R-4350-D	18	22	3	7 1/2
R-4350-E	24	29	3	9

■ Note: When specifying/ordering grates, refer to “Choosing the proper inlet grate” on pages 117-118.
 For a complete listing of FREE OPEN AREAS and WEIR PERIMETERS of all NEENAH grates, refer to pages 306-311.

R-4351-B
Beehive Grate

Heavy Duty

CATALOG NUMBER	GRATE TYPE	SQ. FT. OPEN	WEIR PERIMETER LINEAL FEET
R-4351-B	Beehive	0.5	3.9

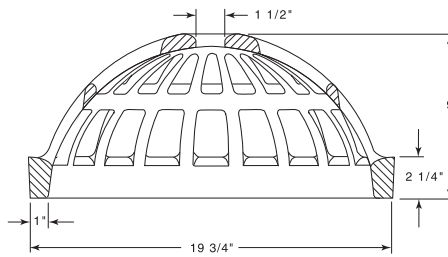


For bell of 12" bell and spigot pipe. Since pipe is made under many specifications, there is a wide variation in dimensions. Check the grate size as shown on the drawing to be sure it will fit the pipe you are using.

R-4351-C
Beehive Grate

Heavy Duty

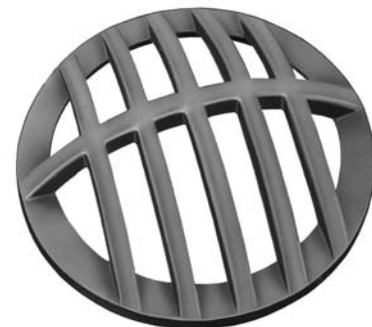
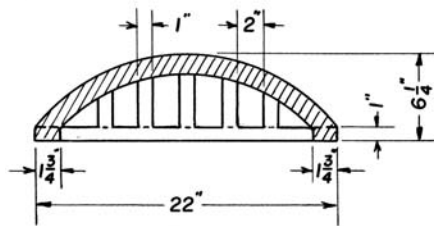
CATALOG NUMBER	GRATE TYPE	SQ. FT. OPEN	WEIR PERIMETER LINEAL FEET
R-4351-C	Beehive	1.2	5.2



R-4351-D
Beehive Grate

Heavy Duty

CATALOG NUMBER	GRATE TYPE	SQ. FT. OPEN	WEIR PERIMETER LINEAL FEET
R-4351-D	Beehive	1.6	5.8



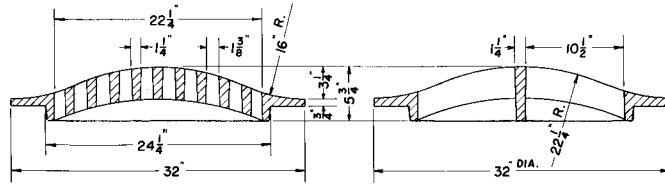
For bell of 18" tile or concrete bell and spigot pipe. Since pipe is made under manufacturers specifications, there is a wide variation in dimensions. Check the grate size as shown on the drawing to be sure it will fit the pipe you are using.

DRAINAGE GRATES 7

■ Note: When specifying/ordering grates, refer to "Choosing the proper inlet grate" on pages 117-118.
 For a complete listing of FREE OPEN AREAS and WEIR PERIMETERS of all NEENAH grates, refer to pages 306-311.

R-4352 Beehive Grate

Heavy Duty

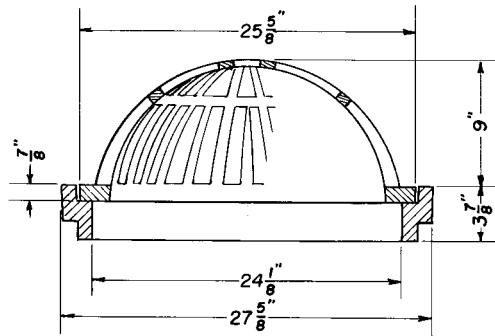


CATALOG NUMBER	GRATE TYPE	SQ. FT. OPEN	WEIR PERIMETER LINEAL FEET
R-4352	Beehive	1.3	5.8

R-4353 Beehive Grate, Frame

Light Duty

CATALOG NUMBER	GRATE TYPE	SQ. FT. OPEN	WEIR PERIMETER LINEAL FEET
R-4353	Beehive	1.8	6.7

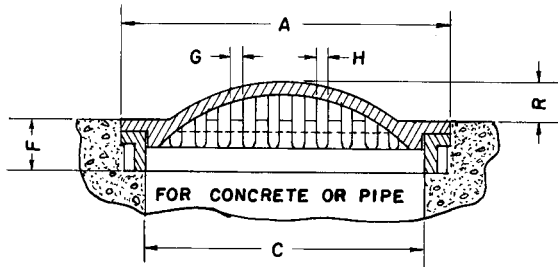


Also available with 2 7/8" tall frame, if requested.

R-4360 Series Beehive Grate, Frame

Light Duty

CATALOG NUMBER	GRATE TYPE	SQ. FT. OPEN	WEIR PERIMETER LINEAL FEET
R-4360-A	Beehive	0.6	4.3
R-4360-B	Beehive	0.8	4.7
R-4360-C	Beehive	1.4	4.5
R-4360-D	Beehive	0.7	6.3



Various kinds and types of pipe are made under many specifications and dimensions vary. Check the grate sizes in the table to be sure the grates and frames will fit the pipe you are using.

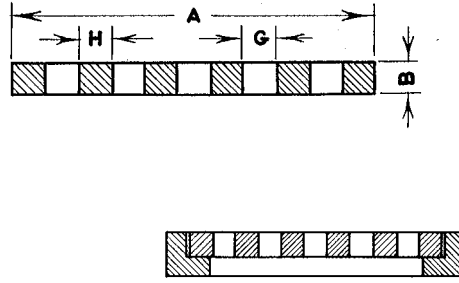
Catalog No.	Dimensions in inches					
	A	C	F	G	H	R
R-4360-A	18 1/4	16 1/4	2 3/4	1	1/2	1 5/8
R-4360-B	22	18	2 3/4	1	1/2	1 3/4
R-4360-C	23 1/4	17	3 1/2	2	1 1/2	1 3/4
R-4360-D	28 1/2	24	3 5/8	1	1	3

■ Note: When specifying/ordering grates, refer to "Choosing the proper inlet grate" on pages 117-118.
 For a complete listing of FREE OPEN AREAS and WEIR PERIMETERS of all NEENAH grates, refer to pages 306-311.

R-4370 Series Round Drainage Grate

Heavy Duty

CATALOG NUMBER	GRATE TYPE	SQ. FT. OPEN	WEIR PERIMETER LINEAL FEET
R-4370-1	C	0.1	1.7
R-4370-2	G	0.2	2.5
R-4370-3	E	0.4	3.9
R-4370-4	G	0.6	3.9
R-4370-5	G	0.8	4.7
R-4370-6	G	0.8	5.1
R-4370-7	G	0.8	5.2
R-4370-8	E	1.0	5.5
R-4370-9	C	1.3	5.8
R-4370-10	A	1.1	5.8
R-4370-12	F	0.9	5.8
R-4370-13	G	1.3	5.8
R-4370-15	D	1.0	5.9
R-4370-17	D	1.0	6.0
R-4370-18	E	1.3	6.0
R-4370-21	D	0.9	6.0
R-4370-22	D	1.1	6.0
R-4370-23	H	0.9	6.3
R-4370-25	G	1.9	7.6
R-4370-26	G	2.8	8.6
R-4370-27A	G	2.4	9.9



Illustrating R-4370-12

Most grates listed can be furnished with cast iron angle frame when specified.
 Frame is of 1/2" metal.

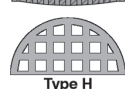
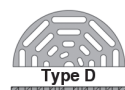
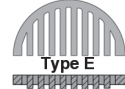
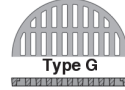
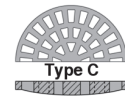
Catalog No.	Dimensions in inches				Type
	A	B	G	H	
R-4370-1	6 3/8	1 1/4	1 x 1	1/2	C
R-4370-2	9 1/2	2 1/2	1 1/2 x 3 1/2	5/8	G
R-4370-3	15	1 1/4	1 x 12 1/4	1	E
R-4370-4	15	1 1/4	3/4 x 2 1/4	3/4	G
R-4370-5	18	1 1/2	1 x 4 1/2	1 1/4	G
R-4370-6 *	19 1/2	1 1/2	3/4 x 5 1/4	3/4	G
R-4370-7	20	1 3/8	2 x 2	1	G
R-4370-8	21	1 1/4	3/4 x 19 1/2	3/4	E
R-4370-9	22	1 1/2	1 1/8	1	C
R-4370-10	22	1 1/2	1 1/4	1	§ A
R-4370-12	22	1 1/2	1 3/8 x 5	1	F
R-4370-13 *	22	1 1/2	2 x 6	1 1/4	G
R-4370-15 **	22 1/2	1 3/4	1 1/8	1	D
R-4370-17	22 3/4	1 3/4	1 1/2	1	D
R-4370-18	22 3/4	1 3/4	1 1/2	7/8	E
R-4370-21	23	1 1/2	1 1/4	1	D
R-4370-22 **	23	1 3/4	1	1 1/8	D
R-4370-23	24	1 1/2	2 1/4 x 2 1/4	1 1/2	≠ H
R-4370-25	29	3	3/4	1	G
R-4370-26	33	2	1 1/2	1	G
R-4370-27A	38	1 1/2	1	1	G

* Light Duty.

** Frame not available.

§ Alternate Type G or Type C grates available.

≠ Alternate Type G grate available.

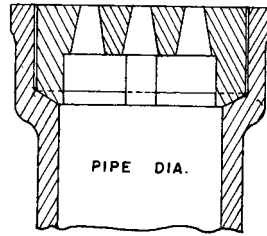


DRAINAGE GRATES 7

■ Note: When specifying/ordering grates, refer to “Choosing the proper inlet grate” on pages 117-118.
 For a complete listing of FREE OPEN AREAS and WEIR PERIMETERS of all NEENAH grates, refer to pages 306-311.

R-4373 Series Soil Pipe Grate

Heavy Duty



Catalog No.	Dimensions in inches		
	Grate Diameter	Depth of Grate	Pipe Size
R-4373-2 *	2 5/8	2 1/2	2
R-4373-3	3 3/4	2 1/2	3
R-4373-4	4 3/4	2 7/8	4
R-4373-6	6 3/4	3	6
R-4373-8	9	3 1/2	8
R-4373-10	11	3 1/2	10
R-4373-12	13 1/8	4 1/4	12
R-4373-15	16	4 1/4	15

* Slotted openings

R-4375 Series Perforated Drain Lids

Light Duty



Holes standard as shown; variations as specified. Since bell and spigot pipe are made under many specifications, dimensions may vary. Check cover sizes in the table to be sure they will fit the pipe you are using.

Catalog No.	Dimensions in inches				
	Diameter	Thickness	Number of Holes	Dia. Holes	Pipe Bell Size
R-4375-A	7 1/8	1/2	12	3/4	4
R-4375-B	9 1/2	1/2	12	3/4	6
R-4375-F	21 1/4	5/8	24	3/4	15
R-4375-G	25 1/2	5/8	24	3/4	18
R-4375-K *	33 1/2	3/4	36	1	24

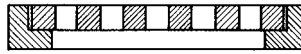
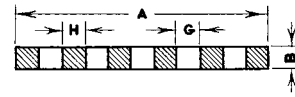
* Lid has six 2" tall lugs on bottom

■ Note: When specifying/ordering grates, refer to "Choosing the proper inlet grate" on pages 117-118.
 For a complete listing of FREE OPEN AREAS and WEIR PERIMETERS of all NEENAH grates, refer to pages 306-311.

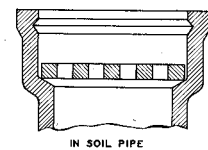
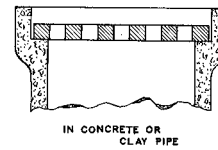
R-4380 Series Flat Bar Drainage Grate

Light Duty

CATALOG NUMBER	GRATE TYPE	SQ. FT. OPEN	WEIR PERIMETER LINEAL FEET
R-4380-AA1	E	2.8 sq. in.	1.0
R-4380-A	E	3.7 sq. in.	1.1
R-4380-A1	E	6.0 sq. in.	1.2
R-4380-B1	E	4.8 sq. in.	1.3
R-4380-1	E	5.4 sq. in.	1.4
R-4380-3	E	6.0 sq. in.	1.6
R-4380-4	E	0.1	2.1
R-4380-4A1	E	0.1	2.2
R-4380-4A	E	0.2	2.6
R-4380-6	G	0.2	2.8
R-4380-7	G	0.3	3.1
R-4380-8	E	0.3	3.3
R-4380-9	E	0.4	3.7
R-4380-10	E	0.5	3.9
R-4380-11	E	0.5	3.9
R-4380-12	E	0.6	4.0
R-4380-13	G	0.7	4.2
R-4380-13A	E	0.9	4.7
R-4380-14	E	0.7	4.7



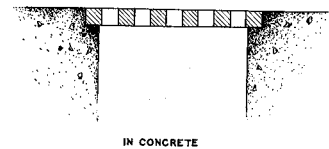
CATALOG NUMBER	GRATE TYPE	SQ. FT. OPEN	WEIR PERIMETER LINEAL FEET
R-4380-15	E	0.6	4.7
R-4380-16	E	0.8	5.0
R-4380-17	E	0.8	5.0
R-4380-18	G	0.7	5.2
R-4380-21	G	1.3	6.3
R-4380-22	G	1.5	7.0
R-4380-23	G	1.1	7.3
R-4380-24	G	1.7	7.9
R-4380-25	G	2.5	8.4
R-4380-26	G	2.7	8.8



Angle frame as shown can be furnished with many grates, as noted.
 Special frame anchors furnished on request.

Catalog No.	Dimensions in inches			
	A	B	G	H
R-4380-AA1	3 3/4	3/8	3/8	3/8
R-4380-A	4	1/2	3/8	3/8
R-4380-A1 *	4 3/4	3/8	1/2	3/8
R-4380-B1	5	1/2	1/2	1/2
R-4380-1	5 1/2	1/2	1/2	1/2
R-4380-3 *	6	1	1/2	3/4
R-4380-4 *	8	1/2	5/8	5/8
R-4380-4A1	8 1/2	3/4	1	1
R-4380-4A *	10	3/4	1/2	1/2
R-4380-6	10 1/2	3/4	3 1/2 x 1 1/2	3/4
R-4380-7	11 3/4	1	3/4 x 4 1/4	1
R-4380-8 *	12 1/2	1	1	1
R-4380-9 *	14 1/4	3/4	7/8	15/16
R-4380-10 *	15	5/8	3/4	3/8
R-4380-11	15	1	5/8	3/4
R-4380-12	15 1/4	1/2	5/8	3/8
R-4380-13 *	16	1	1 1/8	1
R-4380-13A	17 3/4	1/2	1 x 3 1/2	1/2
R-4380-14 *	18	3/4	7/8	3/4
R-4380-15 *	18	1	1 1/8	1 1/4
R-4380-16 *	19	1/2	3/4	1
R-4380-17 *	19	1	3/4	1/2
R-4380-18 *	20	1	2 x 2	1 1/4
R-4380-21 *	24	3/4	1/2	1/2
R-4380-22 *	26 5/8	3/4	7/8	3/4
R-4380-23	28	1	2 1/8 x 4	2
R-4380-24	30	3/4	7/8	3/4
R-4380-25 *	32	3/4	1 3/8	1
R-4380-26	33 1/2	3/4	1 3/8	1
R-4380-32	39 3/4	3 1/2	1	1

* Frame available on request

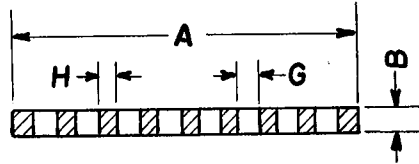


■ Note: When specifying/ordering grates, refer to "Choosing the proper inlet grate" on pages 117-118.
 For a complete listing of FREE OPEN AREAS and WEIR PERIMETERS of all NEENAH grates, refer to pages 306-311.

R-4385 Series Bar Grates

Light Duty

CATALOG NUMBER	GRATE TYPE	SQ. FT. OPEN	WEIR PERIMETER LINEAL FEET
R-4385-B	E	0.1	2.1
R-4385-C	E	0.3	2.7
R-4385-E	E	0.5	3.9
R-4385-F	E	0.5	4.8
R-4385-G	E	1.0	5.8
R-4385-H	G	1.6	7.6
R-4385-J	G	2.5	8.6
R-4385-K	G	2.7	9.4

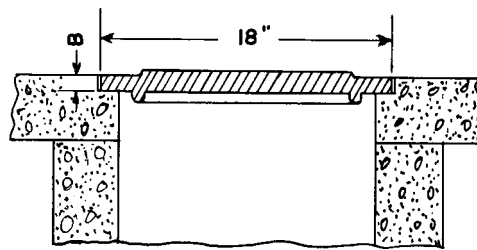


For heavy traffic grates, see the R-4030 Series. Check the grate sizes in the table to be sure they will fit the pipe you are using.

Catalog No.	Pipe Size	Dimensions in inches			
		A	B	G	H
R-4385-B	6	8	1/2	5/8	9/16
R-4385-C	8	10 3/8	1/2	1/2	7/16
R-4385-D	10	12 1/2	5/8	1/2	1/2
R-4385-E	12	14 3/4	3/4	7/8	7/8
R-4385-F	15	18 1/4	7/8	5/8	3/4
R-4385-G	18	22	1	1	1
R-4385-H	24	29	1 1/4	1 5/16	3/4
R-4385-J	27	32 3/4	1 1/2	1 5/16	3/4
R-4385-K	30	36	1 1/2	1 1/4	1

R-4388 Series Cast Iron Lid

Light Duty



Illustrating R-4388-A

Catalog No.	Dimensions in inches	
	B	Notes
R-4388-A	1/4	Solid
R-4388-B	1/2	Solid
R-4388-C	1/4	Grated
R-4388-E	1/2	*

* Six 1" holes, 18 1/4" diameter



Illustrating R-4388-C

■ Note: When specifying/ordering grates, refer to "Choosing the proper inlet grate" on pages 117-118.
 For a complete listing of FREE OPEN AREAS and WEIR PERIMETERS of all NEENAH grates, refer to pages 306-311.

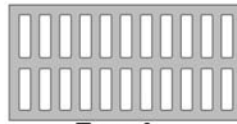
R-4400 to R-4899 Series Square and Rectangular Drainage Grates

The gratings in this series are rated heavy duty when supported on all four sides.

Other special sizes quoted on request in the event none of the standards shown in this series meet your requirements. In ordering replacement grates to be used on existing catch basins, be sure to specify the exact size of opening in which the grate will be used.

Many of the grates in this series can be adapted to trench frames with support on two sides. Most are qualified as heavy duty when the short dimension spans the trench.

Advise loading requirements so we can assist you with your choice.



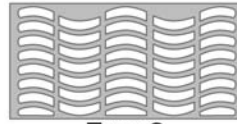
Type A



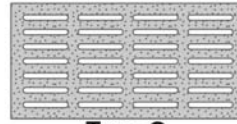
Type B



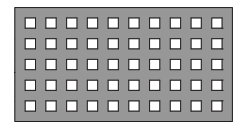
Type C



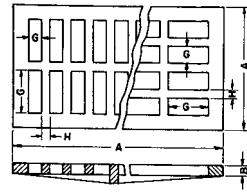
Type S



Type Q



Type H



Catalog No.	Dimensions in inches				Type	Catalog No.	Dimensions in inches				Type
	A	B	G	H			A	B	G	H	
Square - Heavy Duty						Rectangular - Heavy Duty					
R-4400-A *	8 x 8	1	1 x 5 1/4	1	A	R-4884-A * **	36 x 36	1 3/4	2 x 4	1 3/8	C
R-4401 *	8 x 8	1	3/8 x 3	3/8	A	R-4389-O	6 x 12	1 1/4	3/4 x 4 1/2	1	B
R-4408 *	10 1/4 x 10 1/4	1	7/8 x 8 1/4	1	B	R-4390	6 x 24	1	3/4 x 2 1/8	1	B
R-4441-1 *	12 x 12	1	3/8 x 4 1/2	1	Q	R-4403	8 x 14	1	1 1/2 x 5 7/8	1/2	A
R-4511 *	14 x 14	1 1/2	1 1/2 x 5 1/8	1 1/8	A	R-4404-C	8 x 24	1	1 1/16 x 6	1	B
R-4550 *	15 x 15	1 1/4	3 1/2 x 3 1/2	3/4	H	R-4406	8 x 24	1 3/4	1 5/16 x 2 5/8	1	B
R-4552 *	16 x 16	1 3/4	1 1/4 x 6 1/4	1 1/4	A	R-4406-1	8 x 24	1 3/4	1 x 5	3/4	A
R-4557 *	16 x 16	1 1/4	1 3/16 x 3 3/8	3/4	A	R-4406-2	8 x 24	1 3/4	1 x 2	1	C
R-4558 *	17 5/8 x 17 5/8	1 1/4	1 x 5	1/2	C	R-4406-C	9 1/4 x 23 7/8	1	1 x 2 7/8	1	A
R-4660 *	18 x 18	1 1/2	3 x 4 1/2	1 1/4	C	R-4406-P	9 x 23 7/8	1 1/2	1/4 x 2 5/16	1	P
R-4662 *	19 3/4 x 19 3/4	2 1/2	1 3/8 x 8 1/2	1	A	R-4407-2A	9 1/2 x 24	1 3/4	1 x 7 1/2	1	B
R-4720 *	20 x 20	1 3/4	1 3/8 x 3 1/2	1 1/4	C	R-4409	10 x 17 3/4	1 1/2	1 x 3 1/2	1	A
R-4721-A *	21 x 21	1 3/4	1 1/2 x 8	1 1/4	A	R-4409-A	10 x 24	1 3/4	1 1/4 x 4 3/4	1	C
R-4725 *	21 x 21	2	3 x 3	1	H	R-4409-C *	10 x 24	1 3/4	1 x 7	1	B
R-4760 *	22 x 22	1 3/4	3 x 5 3/4	1	C	R-4409-E *	10 x 24	1 3/4	1 x 3 1/2	1	A
R-4765	23 x 23	2	1 x 6 1/2	1	A	R-4409-G	10 x 24	1 1/2	2 x 8	1	B
R-4808-A *	24 x 24	2	1/2 x 4 1/2	1 5/8	Q	R-4421 *	10 x 40	1 1/8	1 1/4 x 8 1/2	1	C
R-4810 *	24 x 24	2	1 3/4 x 6	1 1/4	C	R-4423-A	10 1/4 x 48	1 5/8	1 1/2 x 3 1/2	1	A
R-4820 * †	24 x 24	2	1 3/4 x 5 7/8	1 3/8	C	R-4424	10 1/2 x 23 1/8	1 3/4	2 x 2	1	H
R-4826 * *	24 x 24	2	1 x 6	1 1/4	A	R-4430-1	11 x 23 7/8	1 1/8	1/4 x 3 5/16	1	P
R-4832 *	24 x 24	1 5/8	1 1/16 x 4 3/4	1	C	R-4430-A	11 x 24	1 1/2	3/4 x 4 1/8	3/4	A
R-4832-B *	26 x 26	1 3/4	1 1/16 x 4	1	C	R-4430-B	11 1/2 x 24	1 1/2	1 x 6 5/8	1	C
R-4833 *	26 x 26	2	2 x 7	1	A	R-4435-1	11 7/8 x 14	2	1 x 5 1/2	1	C
R-4836	26 x 26	2	1 1/8 x 4 3/4	1 1/4	C	R-4443	12 x 14	1 3/4	1 1/2 x 5 1/4	1 1/4	A
R-4850 *	27 x 27	2	2 1/2 x 7 1/2	1	C	R-4449 *	12 x 24	1 1/2	1 1/2 x 4 1/4	1	A
R-4852 *	27 x 27	2	1 1/2 x 5	1	C	R-4450 *	12 x 24	1 3/4	1 x 4 1/2	1	A
R-4852-A *	27 x 27	1	1 1/2 x 5	1	C	R-4450-A *	12 x 24	1 3/4	2 x 2	1	H
R-4859-C * †	27 1/2 x 27 1/2	1	2 x 7	1	A	R-4451 *	12 x 24	2	1 1/2 x 3 3/4	1	C
R-4859-Q * †	27 1/2 x 27 1/2	1	3/8 x 7	1 1/8	Q	R-4454	12 x 26	1 1/2	1/2 x 11 1/2	1/2	C
R-4859-S * †	27 1/2 x 27 1/2	1	1 1/2 x 4 3/4	1	S	R-4460 *	12 x 30	2	1 1/4 x 4	1	A
R-4871 * † §	27 1/2 x 27 1/2	1	2 x 24	1	B	R-4462 *	12 x 35 3/4	1 1/2	3/4 x 9	1	B
R-4880 *	28 x 28	2	1 1/2 x 7 1/4	1	C	R-4470 *	12 x 48	1 3/4	1 x 4 1/2	1	A
R-4880-C *	30 x 30	1 1/2	1 1/4 x 5 7/8	1 1/4	C	R-4523	14 x 23 7/8	1	1 1/16 x 5 1/2	1	A
R-4882 *	34 x 34	2	2 x 14 1/2	1 1/8	A	R-4525 *	14 x 24	2	1 x 5 1/2	1	A
R-4882-A *	34 x 34	2	1 x 9	1 1/8	A	R-4530	14 1/2 x 22	2	1 1/2 x 5 1/2	1 1/4	A

* Angle frame available

** Grate in two pieces

*** Grate in three pieces

§ Grate lettered "DUMP NO WASTE DRAINS TO RIVER"

* Light Duty

† Convex

‡ Meets traffic load called for in AA-6005 of 25,000# proof load

DRAINAGE GRATES 7

■ Note: When specifying/ordering grates, refer to "Choosing the proper inlet grate" on pages 117-118.
 For a complete listing of FREE OPEN AREAS and WEIR PERIMETERS of all NEENAH grates, refer to pages 306-311.

R-4400 to R-4899 Series Square and Rectangular Drainage Grates continued...

Catalog No.	Dimensions in inches				Type	Catalog No.	Dimensions in inches				Type
	A	B	G	H			A	B	G	H	
Rectangular - Heavy Duty						Rectangular - Heavy Duty					
R-4531	14 1/2 x 23 7/8	1	1 x 5	1	A	R-4730 •	19 1/2 x 32	1 1/2	2 x 5	1	A
R-4540	14 1/2 x 26 1/2	2	2 1/4 x 4	1	C	R-4731 •	19 1/2 x 39	1 1/2	2 x 4 1/2	1	C
R-4541 *	14 1/2 x 28	1 3/4	1 1/4 x 5	1 1/4	A	R-4732	19 1/2 x 39	1 3/4	1 x 7 1/2	1	A
R-4544	14 1/2 x 37 3/4	1 3/4	2 x 5 3/8	1 1/4	A	R-4735	20 x 23 7/8	1	1 1/16 x 8 1/4	1	A
R-4545	14 1/2 x 48	1 3/4	1 1/4 x 5	1 1/4	A	R-4736 *	20 x 24	2	1 1/2 x 2 1/2	1 1/4	C
R-4548	15 x 20 1/2	1 1/2	2 x 2	3/4	H	R-4738 *	20 x 24	2	1 x 5	1	A
R-4570-1	15 x 23	1 3/4	1 1/2 x 5 1/2	1 1/8	A	R-4739 *	20 x 24	2	1 1/8 x 4 3/4	1	C
R-4570-2	15 x 23 7/8	1 1/2	1 x 6	1	A	R-4740 *	20 x 28 1/2	2	1 3/7 x 8	1	C
R-4573 *	15 x 30	2 1/2	1 1/8 x 5 1/2	1	A	R-4750 *	20 x 30	2	1 3/7 x 6	1	C
R-4575-A *	15 x 36	1 3/4	1 13/16 x 6 1/2	3/4	A	R-4750-1	20 x 48	2	1 1/2 x 5	1	A
R-4579	15 1/8 x 23	1 1/2	1 3/8 x 5 1/2	1 3/8	A	R-4751	20 1/2 x 27	2	1 3/4 x 5 1/2	1	C
R-4583	15 1/2 x 22 1/4	1 3/4	1 5/8 x 5 1/2	1 3/8	A	R-4752	20 1/2 x 36	1 7/8	2 x 5 3/4	1 1/8	C
R-4584	15 1/2 x 36	1 3/4	1 1/2 x 5 1/4	1 3/8	A	R-4755-B *	21 x 42	1 1/2	1 1/2 x 5 1/2	1	A
R-4585	15 1/2 x 39	1 3/4	1 7/8 x 5 7/8	1 1/4	A	R-4755-C *	21 x 42	1 1/2	1 1/2 x 5 7/8	1	C
R-4586 *	15 3/4 x 36	1 3/4	1 1/2 x 5 1/4	1 3/8	A	R-4759	22 x 23	1 3/4	1 1/2 x 6	1	C
R-4600	16 x 23	2	1 1/4 x 3 3/4	1	A	R-4762 *	22 x 30	1 1/2	2 x 6 1/4	1	C
R-4603-A *	16 x 24	1 1/8	3/4 x 5 1/2	1	A	R-4780 *	22 x 37	2	2 x 8	1	C
R-4604	16 x 24	1 1/2	2 x 4	7/8	C	R-4781 *	22 x 48	2 1/2	1 5/8 x 5 3/8	1 1/4	C
R-4604-C *	16 x 24	2	2 x 5	2	A	R-4795 *	22 1/2 x 45	1 1/2	2 x 6	1	A
R-4604-D	16 x 24	2 1/2	2 1/2 x 6 5/8	3/4	A	R-4798	23 1/4 x 36 1/2	2 3/4	1 1/2 x 7 1/4	1	C
R-4608	16 1/2 x 19 3/4	1 1/2	1 1/4 x 6	1	A	R-4821-A *	23 7/8 x 26	2	1 9/16 x 4 15/16	1 1/4	C
R-4610	16 1/2 x 22	1 3/4	1 1/2 x 4	1	A	R-4825 *	24 x 30	1 1/2	1 1/2 x 4 1/4	1 1/4	C
R-4620	17 x 19	2	1 1/4 x 4 1/4	1 1/8	A	R-4825-A *	24 x 30	2 1/4	1 1/4 x 4 3/4	1	A
R-4630	17 x 20	1 1/2	1 1/4 x 6 1/2	1	C	R-4825-B *	24 x 30	2 1/4	1 1/2 x 6	1	C
R-4632	17 x 21	2	1 3/8 x 8 3/4	1	C	R-4828 *	24 x 33	2 1/4	1 x 4 1/2	1	A
R-4640	17 x 21 1/2	1 3/4	2 1/2 x 4 1/4	1	A	R-4829 *	24 x 33	2 1/4	1 1/2 x 6 1/2	1 1/4	C
R-4641	17 x 23 7/8	1	1 1/16 x 7	1	A	R-4837	24 x 35	2 1/2	1 1/2 x 6 1/2	1 1/2	A
R-4641-A *	17 x 24	2	1 x 7	7/8	A	R-4839 *	24 x 35 7/8	1 3/4	7/8 x 9 3/4	1	A
R-4641-C *	17 x 24	2	1 x 6 1/2	1	C	R-4840 *	24 x 36	2	2 x 4 3/4	1	C
R-4641-F *	17 x 34	1 1/2	1 1/2 x 6 3/4	1	A	R-4843 *	24 x 36	1 3/4	1 3/4 x 6	1	A
R-4649	17 1/4 x 24	1 3/4	1 x 6 1/2	1	A	R-4853	24 x 39	2 1/2	1 3/4 x 5 3/4	1 5/8	A
R-4652 *	17 3/4 x 29 3/4	2	1 1/2 x 4 1/2	1 1/8	A	R-4853-A	24 x 45	3	1 1/2 x 6 1/4	1 1/4	A
R-4670-A *	18 x 24	1 1/2	1 1/8 x 6 3/4	1 1/8	A	R-4853-B1	24 x 51	3	1 1/2 x 5	1 1/4	C
R-4671 *	18 x 24	2	1 x 6 1/2	1 1/16	A	R-4855	26 x 30	2	1 1/2 x 5	1 1/4	A
R-4672 *	18 x 24	2	1 3/8 x 4 1/2	1 1/8	C	R-4857	26 x 45	2	1 1/2 x 5 1/2	1	A
R-4689 *	18 x 27 1/4	2	2 x 6 3/4	1	C	R-4890 *	28 x 37	2	1 3/4 x 7 5/8	1 1/4	C
R-4692-A	18 x 34	2 1/4	1 7/16 x 8	1	C	R-4891 **	30 x 48	1 1/2	1 1/2 x 4 1/4	1 1/4	A
R-4698 *	18 x 36	1 3/4	2 x 4	1 3/8	A	R-4893 ***	30 x 78	2	1 1/2 x 5	1 1/4	C
R-4710 *	18 x 36	2	1 3/4 x 6 1/4	1 1/4	C	R-4893-B *	32 x 34	2	1 x 2	1	C
R-4711 *	18 x 39	2	1 1/4 x 5 1/2	1 1/4	C	R-4894 *	33 x 36	2	1 1/2 x 6 1/2	1 1/4	C
R-4718	18 3/4 x 36 3/4	2	2 x 8	1	A	R-4895-2 **	36 x 66	2	1 1/2 x 6 1/2	1 1/4	A

* Angle frame available
 ** Grate in two pieces
 *** Grate in three pieces
 § Grate lettered "DUMP NO WASTE DRAINS TO RIVER"

• Light Duty
 † Convex
 ‡ Meets traffic load called for in AA-6005 of 25,000# proof load

R-6668 to R-6669 Series
Pressure-Type Manhole Frame, Solid Lid

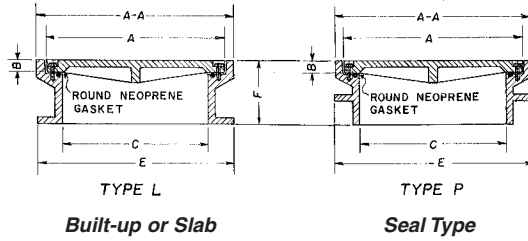
Heavy Duty

Suitable for low pressure application up to 20 p.s.i.

Manhole covers of this series are for use on built-up manholes or slab construction in either regular or seal type design. Suitable for use on pressure manholes or as water-resistant electrical junction boxes on bridges, etc. Lids are bolted to

frames with countersunk stainless steel hex head cap screws and sealed with neoprene gaskets. Concealed pickholes are included for complete water-tight application.

Units are shipped assembled with gasket glued to frame.



Illustrating Type L

		Dimensions in inches						No. of Bolts
Catalog No. Type L	Catalog No. Type P	A	AA	B	C	E	F	
		Square						
R-6668-L1	R-6668-P1	15 3/4 x 15 3/4	17 1/2 x 17 1/2	1 1/2	12 x 12	18 x 18	8	4
R-6668-L3		21 3/4 x 21 3/4	23 1/2 x 23 1/2	1 1/2	18 x 18	24 x 24	8	4
R-6668-L6	R-6668-P6	27 5/8 x 27 5/8	29 1/2 x 29 1/2	1 1/2	24 x 24	30 x 30	8	8
		Rectangular						
R-6669-L1		15 3/4 x 21 3/4	17 1/2 x 23 1/2	1 1/2	12 x 18	18 x 24	8	6
R-6669-L10	R-6669-P10	33 3/4 x 51 3/4	35 1/2 x 53 1/2	1 1/2	30 x 48	36 x 54	8	16
R-6669-L3	R-6669-P3	21 3/4 x 27 3/4	23 1/2 x 29 1/2	1 1/2	18 x 24	24 x 30	8	8